

FEATURES

EMEC ORP electrodes assures long-time stability and accuracy. Easy-maintenance electrodes provides accurate reading value and fast response, performances required for the most accurate measurements.

Single and double junction models are available. ORP electrodes double junction models only are suitable for sea-water. Double junction system offers better electrode protection and guarantees a longer service life. Choose double junction models if you are working with materials like *sulphide, sulfur and silver*.

DURABILITY

Electrode's lifetime is affected by the working conditions: such as temperature, solution type (acid or alkaline). Usually working at room temperature with a weak solution the electrode's lifetime is around 2 years. Increasing temperature drastically changes the lifetime. Electrodes get old quickly while stocked.

CALIBRATION

Wash the electrode and dry it without wipes, just shaking it. Don't wipe or brush, this would create electrostatic charges that can influence the reading of the electrode. Follow the controller's electrode calibration procedure, always use new buffer solutions.

MAINTENANCE

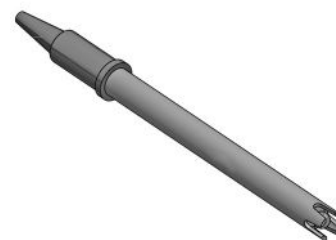
When the reading of the electrode is slow or unstable it may be because it's dirty, cleaning is needed at fixed intervals to remove the dust. Remove the electrode from the system, wash it with clean fresh water and then dip it in to an acid solution of HCl (max 10%) for five minutes. Abundantly rinse it with fresh water and perform a new calibration.

STOCKING

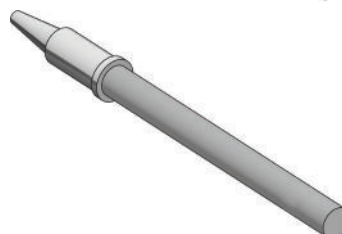
Always keep the electrodes in the original stocking bottles. Never leave the electrodes dry, keep it in water for short time stocking.

The section below shows the electrode's differences so that you can select the electrode that best fit in your application.

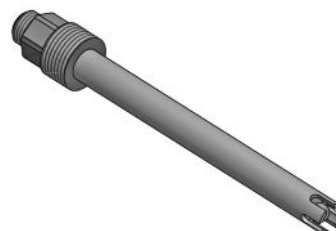
ERHS
ERHM
ERHL
ERHMD
ERHMD/100



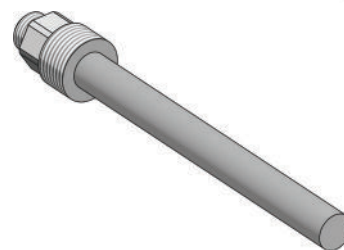
ERHSC



ERHSN6



ERHSC/SN6



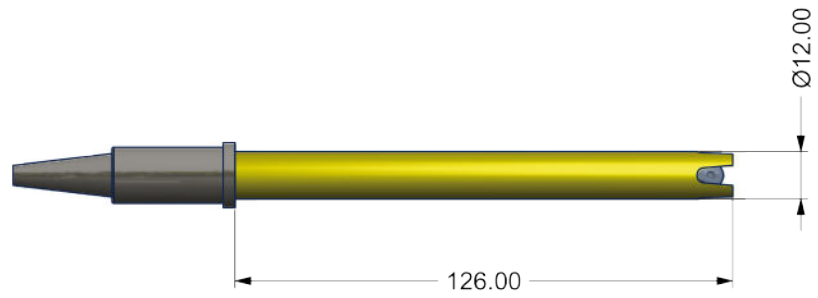
ERHHL



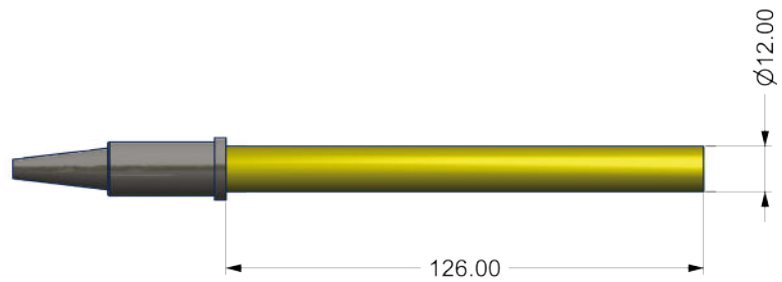
	ERHS	ERHM	ERHL	ERHMD	ERHHL	ERHSN6	ERHMD/100	ERHSC	ERHSC/SN6
Measuring Range	± 1000 mV	± 1000 mV	± 1000 mV	± 1000 mV	± 1500 mV	± 1000 mV	± 1000 mV	± 1000 mV	± 1000 mV
Resolution	1	1	1	1	1	1	1	1	1
Max pressure/ temp.	7 bar/70°C (3,5 bar/80°C)	7 bar/70°C (3,5 bar/80°C)	7 bar/70°C (3,5 bar/80°C)	7 bar/70°C (3,5 bar/80°C)	10 bar/100°C	7 bar/70°C (3,5 bar/80°C)	7 bar / 100°C	7 bar/70°C (3,5 bar/80°C)	7 bar/70°C (3,5 bar/80°C)
Body	EPOXY	EPOXY	EPOXY	EPOXY	GLASS	EPOXY	EPOXY	EPOXY	EPOXY
Electrode	Platinum	Platinum	Platinum	Platinum	Platinum	Platinum	Platinum	Platinum	Platinum
Electrical Connection	BNC	BNC	BNC	BNC	SN6	SN6	BNC	BNC	SN6
Cable length	0,8 m	4,5 m	15 m	4,5 m	10 m	without cable	4,5 m	4,5 m	without cable
Minimum working conductivity	100 µS	100 µS	100 µS	1 µS	100 µS (life time) 10 µS (spot time)	100 µS	100 µS	100 µS	100 µS
Features	-	-	-	Low ionic Double junction	Low Cl ₂ concentration	-	Double junction	Self cleaning Double junction	Self cleaning Double junction

FEATURES

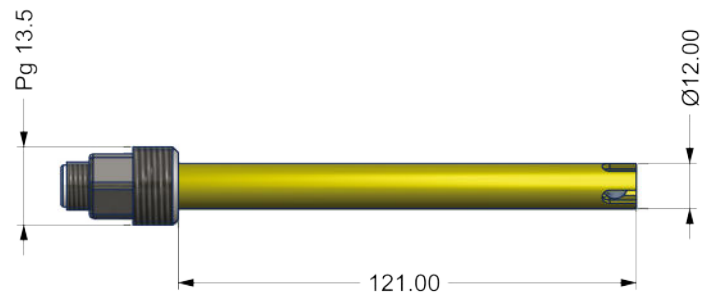
ERHS
ERHM
ERHL
ERHMD
ERHMD/100



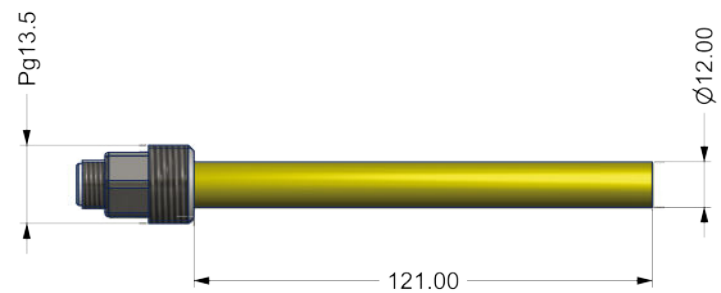
ERHSC



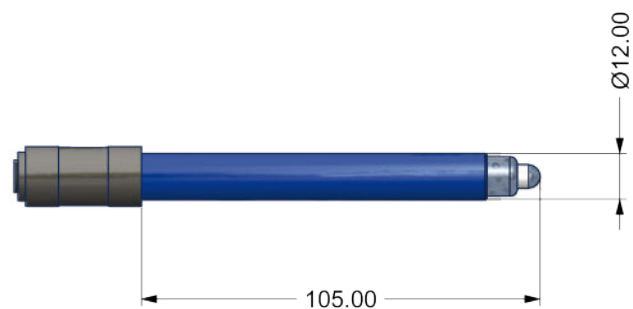
ERHSN6



ERHSC/SN6



ERHHL



ACCESSORIES

For updated list of accessories refer to technical datasheet.

ASSEMBLIES

- **PEF1** - Off-line probe holder
For pH, ORP, chlorine amperometric cells and temperature electrodes. Flow level control and proximity switch (mod. SEPR). Max 50°C. Fittings 6x8.
- **PEF5** - Off-line probe holder
For pH, ORP (PG13,5 thread), chlorine amperometric cells and temperature electrodes. Flow level control and proximity switch (mod. SEPR). Max 50°C. Fittings 6x8.
- **PEF2** - Off-line probe holder
For pH, ORP, chlorine open amperometric cells and temperature electrodes. Flow level control and proximity switch (mod. SEPR). Max 50°C. Fittings 6x8.
- **PEF3** - Off-line probe holder
For pH, ORP (PG13,5 thread) chlorine open amperometric cells and temperature electrodes. Flow level control and proximity switch (mod. SEPR). Max 50°C. Fittings 6x8.
- **PEF22 and PEF23** - Off-line probe holder for MAX5 connection
- **NPED1** - Off-line probe holder
For Ø12 electrodes, with PG13,5 thread. Max 50° C, 5bar. Fittings 6x8.
- **NPED2** - Off-line probe holder
For two electrodes, epoxy Ø12. Max 50° C, 5bar. Fittings 6x8.
- **NPED3** - Off-line probe holder
For pH and ORP Ø12 electrodes and conductivity probes with 3/4" threading. Max 50° C, 5bar. Fittings 6x8.
- **NPED4** - Off-line probe holder
For two EPH, ERH electrodes, epoxy Ø12. Max 50° C, 5bar, flow sensor with N.O. contact. Fittings 6x8.
- **NPED4/2F** - Two wires version for instruments with N.C. contact.
- **NPED4-3/4** - Off-line probe holder
For two EPH, ERH electrodes, 3/4" threading, epoxy body Ø12. Max 50° C, 5bar, flow sensor with N.O. contact. Fittings 6x8.
- **PEA** - In-line probe holder
For pH and ORP electrodes, Ø12. 1/2" connection, max 65°C. PVDF body.
- **PEB** - In-line probe holder
For pH and ORP electrodes, Ø12. 3/4" connection, max 65°C.
- **PEL** - PVDF in-line probe holder for "T" connection.
For pH and ORP electrodes with 1/2" or 3/4" thread. Max 90°C, 7 bar (130°C, 3 bar).
- **PELC** - PVDF in-line probe holder for saddle connection
For pH and ORP electrodes with 1/2" or 3/4" thread. Max 90°C, 7 bar (130°C, 3 bar).
- **PEC** - PVC Immersion probe holder
For pH and ORP electrodes, Ø12. Length 100 cm.
- **PEC/SN6** - PVC Immersion probe holder
For pH and ORP electrodes, with PG13,5 thread. Length 100 cm.
- **GHIERA** - PG13,5 threading nut with o-ring

BUFFER SOLUTIONS

Technical buffer solutions for ORP electrodes:

- **BSD** - 650 mV, 50ml.

AMPLIFIER

- **AD11 RH** - Amplifier for ORP electrodes with galvanic isolation. Max distance 150m. 1 channel.
- **AD12** - Amplifier for ORP electrodes with galvanic isolation. Max distance 150m. 2 channels.

CABLES

- **CASN6S** - Cable BNC/SN6 for probe ERHSN6. Length 5mt.
- **CASN6M** - Cable BNC/SN6 for probe ERHSN6. Length 10mt.
- **CASN6L** - Cable BNC/SN6 for probe ERHSN6. Length 15mt.

EMEC

ISO 9001:2008
ISO 14001:2004
OHSAS 18001:2007



Via Donatori di sangue, 1 - 02100 Rieti - Italy
Tel. +39 0746 2284 1 - Fax +39 0746 2284 2 - <http://www.emec.it>

Specifications subject to change without notice.
EN R1-01-16