

# Thank you STP, **Welcome STN**

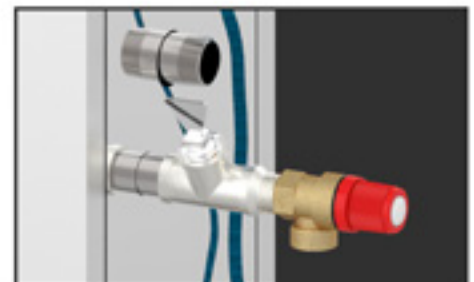


SAWO announces discontinuation of STP steam generators to give way to a NEW and improved model - STN.



## What is new?

- ✓ Design and size
- ✓ Bigger steam outlet ( 3/4" )
- ✓ Overpressure valve with pipe
- ✓ Easy water level probe maintenance
- ✓ Reversible mounting



# Unleash steam generators of the future!



Replacement of STP



## STN Steam Generator

A revolutionary steam generator is now here to serve the most demanding commercial and residential users. With five STN steam generators connected together and controlled with one single control panel, it is possible to reach power output up to 75 kW. STN is packed with convenient features and innovative solutions to experience enjoyable steam bath and hassle-free maintenance.

STN is built from high-quality stainless steel to ensure durability in heavy use and to give simple and timeless design for this high-performing steam generator.

Take your steam bath to the new level with SAWO STN steam generator.





## STN Overview

- » Replacement of STP steam generators
- » Heavy-duty commercial and residential steam generators
- » Build from stainless steel with brushed top cover
- » Wall-mounted on either side
- » Steam output up to 20 kg/hr/unit
- » Separate control panel: STP Classic 2.0, STP Classic or STP Stainless Steel Touch
- » Autodrain on the side or at the bottom
- » Square-shaped steam head (100 mm x 100 mm)
- » Overpressure valve with pipe
- » Heating elements attached to holder for easy maintenance
- » Error detection: Displays error codes
- » Remote control for automated households. (Only with Stainless Steel Touch Control)
- » Optional: Provisions for aroma pump, fan and light dimmer
- » Optional: Demand button inside steam room
- » Connection for up to 5 steam generators using 1 control
- » 4,5 kW (2HE) 7,6L tank capacity
- » 6, 7,5 kW (3HE) 10,3L tank capacity
- » 9, 12, 15 kW (6HE) 17,3L tank capacity
- » 220-240V 1N~ Single Phase Connection applicable for 2HE
- » 220-240V 2N~ Two Phase Connection applicable for 2HE
- » 380-415 3N~ Three Phase Connection applicable for 3HE & 6HE
- » 230V 1N~ / 230V 3~ / 400V 3N~ Connection applicable for selected 3HE & 6HE models

## Technical DATA

### 2 Heating Elements

MODEL	kW	STEAM ROOM		WIDTH	SIZE DEPTH (mm)	HEIGHT	WEIGHT (kg)	CONTROL
		MIN (m³)	MAX					
STN-30-1/2	3,0		3	560	185	485	18,5	Touch / Classic / Classic 2.0
STN-35-1/2	3,5		3,5	560	185	485	18,5	Touch / Classic / Classic 2.0
STN-40-1/2	4,0		4	560	185	485	18,5	Touch / Classic / Classic 2.0
STN-45-1/2	4,5	2	5	560	185	485	18,5	Touch / Classic / Classic 2.0
STN-50-1/2	5,0	2	6	560	185	485	18,5	Touch / Classic / Classic 2.0

### 3 Heating Elements

MODEL	kW	STEAM ROOM		WIDTH	SIZE DEPTH (mm)	HEIGHT	WEIGHT (kg)	CONTROL
		MIN (m³)	MAX					
STN-45-3	4,5	2	5	560	220	485	20,5	Touch / Classic / Classic 2.0
STN-45-C1/3	4,5	2	5	560	220	485	20,5	Touch / Classic / Classic 2.0
STN-60-3	6,0	3	10	560	220	485	20,5	Touch / Classic / Classic 2.0
STN-60-C1/3	6,0	3	10	560	220	485	20,5	Touch / Classic / Classic 2.0
STN-75-3	7,5	4	15	560	220	485	20,5	Touch / Classic / Classic 2.0
STN-75-C1/3	7,5	4	15	560	220	485	20,5	Touch / Classic / Classic 2.0

### 6 Heating Elements

MODEL	kW	STEAM ROOM		WIDTH	SIZE DEPTH (mm)	HEIGHT	WEIGHT (kg)	CONTROL
		MIN (m³)	MAX					
STN-90-3	9,0	8	20	560	310	485	25,5	Touch / Classic / Classic 2.0
STN-90-C1/3	9,0	8	20	560	310	485	25,5	Touch / Classic / Classic 2.0
STN-120-3	12,0	15	28	560	310	485	25,5	Touch / Classic / Classic 2.0
STN-150-3	15,0	22	40	560	310	485	25,5	Touch / Classic / Classic 2.0

## STP/STN Controls



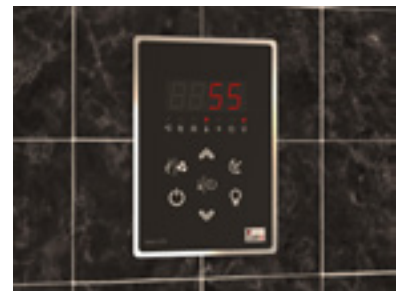
**Stainless Steel Touch Control**  
(for steam generators)

- » Thick stainless steel casing
- » Animated buttons
- » Compatible for automated households
- » Emergency alarm provision
- » Standby mode
- » Weekly timer
- » Error code display
- » Autodrain function
- » Key lock
- » Easy mode
- » Date and time
- » Power consumption counter
- » Decalcifying function
- » Blackout memory
- » Celsius or Fahrenheit temperature unit
- » Light control
- » Fan control
- » Aroma pump control
- » LCD contrast adjustment
- » Temperature sensor with wire
- » 7,5 meters RJ12 cable with connectors
- » Control required for household automation for STP/STN
- » Wooden interface holder (optional)



**Classic Control**  
(for steam generators)

- » Push-buttons
- » LED-display
- » Standby mode
- » Error code display
- » Manual decalcifying process
- » Autodrain function
- » Key lock
- » Light control
- » Fan control
- » Aroma pump control
- » Temperature sensor with wire
- » 7,5 meters RJ12 cable with connectors
- » Wooden interface holder (optional)



**Classic 2.0 Control**  
(for steam generators)

- » *Same as Classic Control*