

ASTER TN



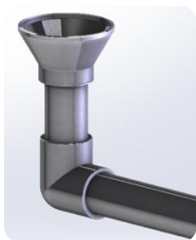
FEATURES

- ✓ Filters manufactured from polyester resin and fiberglass.
- ✓ Excellent finish.
- ✓ Filter color: grey.
- ✓ Fast opening top lid.
- ✓ Fitted with 1" collector arms and easy-to-remove threaded diffuser.
- ✓ Manometer, manual and automatic air drain and manual water drain.
- ✓ Connections to six positions multiport valve with filter, backwash, rinse, recirculate, waste and closed operations.
- ✓ Maximum pressure 2.5 bar.

CARACTERÍSTICAS

- ✓ Filtros fabricados con proyección simultánea de resina de poliéster y fibra de vidrio.
- ✓ Excelente acabado.
- ✓ Color del filtro: gris.
- ✓ Tapa superior de apertura rápida.
- ✓ Montado con colectores de 1" y difusor roscado de fácil manipulación.
- ✓ Manómetro y purga de agua manual y aire automática y manual.
- ✓ Conexiones para válvula selectora de seis vías, con operaciones de filtración, lavado, enjuague, recirculación, vaciado y cerrado.
- ✓ Presión máxima 2.5 bar.

FILTER DETAILS



▪ Cone diffuser



▪ Fitted with 1" collector arms



▪ Fast opening top lid

TECHNICAL DATA

PACKAGING

| Code | Model (mm) | Connections (mm/inch) | | Filtering velocity (m ³ /h/m ²) | Filtration Area (m ²) | Flow (m ³ /h) | Maximum pressure (bar) | Sand (0.4-0.8mm) (kg) | Net weight (kg) | D (mm) | H (mm) | M (mm) | N (mm) | Units per pallet | Box dimension (cm) |
|------------|------------|-----------------------|------|--|-----------------------------------|--------------------------|------------------------|-----------------------|-----------------|--------|--------|--------|--------|------------------|--------------------|
| | | mm | inch | | | | | | | | | | | | |
| 00497-0100 | 350 | 50 | 1 ½" | 50 | 0.096 | 5 | 2.5 | 50 | 9 | 375 | 655 | 400 | 275 | 15 | 39x39x76 |
| 00498-0100 | 450 | 50 | 1 ½" | 50 | 0.16 | 8 | 2.5 | 70 | 15 | 455 | 730 | 415 | 290 | 10 | 52x52x76 |
| 19781-0100 | 500 | 50 | 1 ½" | 50 | 0.19 | 10 | 2.5 | 95 | 15 | 525 | 725 | 419 | 294 | 8 | 56x56x85 |
| 32706-0100 | 550 | 50 | 1 ½" | 50 | 0.24 | 12 | 2.5 | 110 | 20 | 575 | 775 | 450 | 325 | 8 | 65x65x86 |
| 00499-0100 | 600 | 50 | 1 ½" | 50 | 0.30 | 15 | 2.5 | 125 | 21 | 620 | 790 | 445 | 320 | 8 | 65x65x86 |
| 21071-0100 | 650 | 50 | 1 ½" | 50 | 0.33 | 17 | 2.5 | 200 | 24 | 680 | 825 | 487 | 362 | 8 | 70x70x89 |
| 28479-0100 | 680 | 50 | 1 ½" | 50 | 0.36 | 18 | 2.5 | 210 | 26 | 715 | 865 | 475 | 350 | 8 | 70x70x89 |
| 00500-0100 | 750 | 63 | 2" | 50 | 0.44 | 22 | 2.5 | 290 | 30 | 785 | 890 | 565 | 335 | 2 | 80x80x93 |
| 08133-0100 | 900 | 63 | 2" | 50 | 0.64 | 32 | 2.5 | 500 | 48 | 935 | 1020 | 670 | 400 | 2 | 96x96x110 |
| 00501 | 900 | 75 | 2 ½" | 50 | 0.64 | 32 | 2.5 | 500 | 51 | 935 | 1020 | 665 | 395 | 2 | 96x96x110 |

